

**BY MICHAEL JOHN LACHIUSA**

**Directed by Michael Ryczek and Stephen Rader  
Musically Directed by Nick Sula**

Produced by Thomas J. Samorian

Partially supported by grants from



ILLINOIS  
**ARTS**  
Council  
OF THE STATE OF ILLINOIS



Driehaus  
Foundation

Gaylord and Dorothy  
Donnelley Foundation

**BoHo Theatre presents**  
**HELLO AGAIN**

**By Michael John LaChiusa**

Hello Again is presented by special arrangement with

Dramatists Play Service, Inc. New York.

Originally Produced by Lincoln Center Theatre, New York City.

---

<b>CAST</b>	Kevin Bishop	<b>HUSBAND</b>
	Ben Burke	<b>WRITER</b>
	Erin Creighton	<b>YOUNG WIFE</b>
	Adam Fane	<b>YOUNG THING</b>
	Christina Hall	<b>WHORE</b>
	Sean Knight	<b>COLLEGE BOY</b>
	Tom McGunn	<b>SOLDIER</b>
	Adrianna Parson	<b>NURSE</b>
	Heather Townsend	<b>ACTRESS</b>
	Robert Whorton	<b>SENATOR</b>

<b>PRODUCTION TEAM</b>	Michael Ryzek	<b>DIRECTOR</b>
	Stephen Rader	<b>DIRECTOR</b>
	Nick Sula	<b>MUSIC DIRECTOR</b>
	Genny Perrino	<b>CHOREOGRAPHER</b>
	Tom Samorian	<b>PRODUCTION MANAGER</b>
	Peter Blair	<b>ASST. PROD. MGR.</b>
	Meg Love	<b>STAGE MANAGER</b>
	Stephen M. Genovese	<b>SET DESIGNER</b>
	Christine Ferriter	<b>LIGHTING DESIGNER</b>
	Ricky Lurie	<b>COSTUME DESIGNER</b>

**Truth, Beauty, Freedom, Love**  
**The four pillars of BoHo**

As we choose each season, the Artistic Advisory Committee here at BoHo (made up of the Artistic Director, Executive Director, Associate Artistic Director, and various company members) considers a wide variety of artistic pieces in its selection.

It casts a net out as wide as possible to see what choices might be interesting for the new season. One of the most integral parts of choosing the season, though, is how a given piece exemplifies one of the pillars of BoHo. These pillars (Truth, Beauty, Freedom, and Love) were implemented from the start of BoHo as a way to maintain the Bohemian ideals while allowing for structure in the selection process. After many other elements are considered, the Artistic Director chooses a season where each piece represents a pillar (four pillars; four shows in a season).

# CAST BIOGRAPHIES



## KEVIN BISHOP | HUSBAND

Kevin is excited to be back at BoHo. BoHo credits include *La Cage aux Folles*, *Jekyll & Hyde*, *Side Show*, *Edward II* and *The Wild Party*. Other credits: *The Christmas Schooner* and *A Man of No Importance*, *Two Spoons* (Bailiwick), *Into the Woods* (Quest), *1776* (Signal), *Forever Plaid* (Steel Beam), *Happy End* and *Jacques Brel...* (Brown Couch), *Dear World* and *Jane Eyre* (Circle Theatre), *Ragtime* and *Pirates of Penzance* (Light Opera Works), *Colette Collage* and *Passion* (Porchlight). Thanks to Stephen, Michael, Nick, Meg and this incredible cast!



## BEN BURKE | WRITER

Ben is thrilled to be making his Chicago debut with *Hello Again*. Hailing from Wheeling, IL, Ben enjoyed a successful run at Columbia College Chicago, appearing in such shows as *The Rocky Horror Show*, *You Can't Take It With You* and *The Pirates of Penzance*. Thanks to the ridiculously talented cast/crew for their kindness, BoHo for continuously looking out for us, Adam and Heather for being such good sports, his friends for their love and care, and his family, who are basically the most amazing individuals out there. [www.ben-burke.com](http://www.ben-burke.com)



## ERIN CREIGHTON | YOUNG WIFE

Erin is thrilled to be making her debut with the BoHo Theatre. She has recently performed in *Man of La Mancha*, *Gypsy*, *The Fantasticks*, *Brigadoon*, and *You're A Good Man, Charlie Brown*. Erin is also a professional pianist, and has played for *Flanagan's Wake* at Noble Fool Theatre and the Midwest premiere of *An Adult Evening of Shel Silverstein* at the Athenaeum Theatre. Erin thanks her family and friends for their love and support, and her car for its fantastic gas mileage.



## ADAM FANE | YOUNG THING

Adam is honored to be in this production at BoHo. He could not ask for a more nurturing cast and crew. Adam will be a Junior at Roosevelt University. Favorite credits include: Frankie Epps in *Parade* (Illinois All-State Production), the 2009 season at Timberlake Playhouse, and Mark in *Rent: School Edition*. Next, he heads to Wisconsin's Heartland Festival. Special thanks to the faculty at CCPA for letting him take this opportunity. He sends love and thanks to his friends and family.



### **CHRISTINA HALL | WHORE**

Christina is proud to return to BoHo after playing Portia in *The Merchant of Venice*. Credits include Promethean Theatre Ensemble's *Measure for Measure*, *The Rotogravure* at The Athenaeum Theatre, Lifeline's *Duck for President*, and Emerald City Theatre Company's *Aladdin*. Christina earned her BFA at Southern Methodist University, and hails from Houston, TX. She thanks her fiancé, her family, and dear friend Eric for their support, and especially thanks BoHo for the opportunity to work with such an open and creative group of people.



### **SEAN KNIGHT | COLLEGE BOY**

This is Sean's first production with BoHo and he is thrilled to be here. He was most recently seen in the Light Opera Works productions of *The Pirates of Penzance* and *A Little Night Music*. Sean most recently won first place at the 2010 NATS Vocal Competition. This is his second time performing in a production of *Hello Again*. He previously played the Husband at Columbia College Chicago where he graduated with a BA in Musical Theater in May 2009.



### **TOM MCGUNN | SOLDIER**

Tom is excited to be back at Boho after previously being seen in *Jekyll & Hyde*. Other Chicago credits include productions with Circle Theatre (*Gentlemen Prefer Blondes*, *Tommy*), Bailiwick (*Bare*, *Zanna Don't*), Disney (*High School Musical*) and Lyric Opera (*Boris Gudunov*, *Wozzeck*, *Tosca*). Many thanks to family and friends for all your support!



### **ADRIANNA PARSON | NURSE**

Adrianna is thrilled to be in *Hello Again*! This will be her first production at BoHo and her Chicago debut. Past credits include *A Chorus Line*, *High School Musical*, and *Brigadoon* at the Wagon Wheel Theatre in Warsaw, IN. Adrianna is in her third year at the Chicago College of Performing Arts at Roosevelt pursuing her B.F.A in Musical Theatre. She thanks this lovely theatre for their willingness to let her play!



### **HEATHER TOWNSEND | ACTRESS**

Heather most recently appeared in City Lit's *Macbeth*. Credits include *Macabaret* and *Nine with Porchlight*; *Old Times* with Remy Bumpo, *Wings* at Apple Tree, *Grey Gardens* with Northlight, *A Christmas Story* with Theatre Wit, *Cat on a Hot Tin Roof* with Night Blue, *The Frogs* with Pegasus, *Romeo and Juliet* with Theatre Classics, *Whirlybirds* with Stage Left, *American Dream Songbook* with Next, and *Happy End* with Brown Couch. She is a graduate of the Cabaret Conference at Yale, the University of Chicago Law School and Columbia University. Next up, Buffalo Theatre Ensemble's *On Golden Pond*. Thanks to Michael, Stephen and Nick for the opportunity and, as always, love to Jake, Lily and Mimi.



### **ROBERT WHORTON | SENATOR**

Robert is happy to be here at BoHo Theater after an 18 year absence from musical theater. One of Chicago's premier male cabaret artists, his show *Because of You: a tribute to Tony Bennett* was praised by the Chicago Tribune. He represented Chicago at the New York Cabaret Convention 2006 at Lincoln Center as well as the Chicago Cabaret Convention 2006 at The Park West. He has co-starred with renowned songwriter David Friedman in *Listen to My Heart: the Music of David Friedman* and performed at Davenport's, Maxim's, Chicago Cultural Center, Gentry and Drury Lane Water Tower.

## **PRODUCTION CREW BIOGRAPHIES**

### **MICHAEL RYCZEK | DIRECTOR**

Michael is thrilled to be working at BoHo for the first time. He is the Academic Manager of the Theater Department of Columbia College Chicago where he also teaches directing for the stage. Undergraduate degree from Roosevelt University and Master's Degree Northwestern University. He is the former Artistic Director and Founder of Reflection's Theatre and the former Managing Director of Lookingglass Theatre. He freelances as a director and actor, having worked at many theatres around Chicago most recently at Redtwist Theatre where he directed *Marvin's Room* and *The Goat*. He is a proud member of the Artistic Technical Team of the Joseph Jefferson Committee. Favorite directing gigs include *Balm in Gilead*, *Tongue of a Bird* (Midwest premiere) and *Never the Sinner*.

### **STEPHEN RADER | DIRECTOR**

Stephen is a three-time After Dark Award recipient. Directing credits *The Normal Heart*, *Hans Brinker* (2001), and Alexandra Billings' live concert CD *The Story Goes On*, featuring his live recording of "Sweet Dreams." Acting credits include *The Lion in Winter*, *Arrangement for Two Violas*, and Philip Dawkin's play *Ugly Baby*. For Porchlight: *Elegies*, *A New Brain*, *Falsettos*, *Macabaret* and *Merrily We Roll Along*, for which he received a Jeff Nomination. Stephen made his Goodman Theatre debut in *The Light in the Piazza*.

## **NICK SULA | MUSIC DIRECTOR**

Nick is proud to return to Bohemian Theatre Ensemble! BoHo credits: *The Glorious Ones*, *La Cage aux Folles*, *Jekyll & Hyde*, *Songs for a New World*, pianist for *Side Show*, *The Life*, and the *Wild Women of BoHo* cabaret. Other work includes Porchlight: *The Teapot Scandals*, *Ragtime*, *The Secret Garden*, *Sweeney Todd*; Light Opera Works: *The Music Man*, *Oklahoma!*; White Horse Theatre: *Merrily We Roll Along* (Jeff Citation). Cabaret projects: *Seven Deadly Sins of a Diva*, *Not At My Audition*, *Desperate House Managers*, *I'll Stop the World and Belt With You*.

## **GENEVIEVE H. PERRINO | CHOREOGRAPHER**

Genny is thrilled to be a part of BoHo's production of *Hello Again!* She recently graduated this past spring 2009 with a BA in Musical Theater from Columbia College Chicago. Since then she has had several amazing opportunities to choreograph and perform throughout the city. Some of her credits include Mable in *Pirates of Penzance* and Olive Ostravsky in *Spelling Bee*, both at CCC. Currently she can be seen in *Ragtime* at Drury Lane Oakbrook! She would like to thank Michael for getting her involved and being so kind!

## **MEG LOVE | STAGE MANAGER**

Meg is so very excited to be back at BoHo! After stage managing *Songs for a New World* in the runs at Theatre Building and Theatre on the Lake, *Bernarda Alba*, *La Cage Aux Folles*, and *The Glorious Ones*, Meg is proud to be part of another great BoHo production. She'd like to thank the wonderful production team and cast as well as her family, friends and Dan for their love and support in all that she does.

## **STEPHEN M. GENOVESE | SET DESIGNER**

Steve has spent the better part of 30 years involved in theatre in one aspect or another. From stage direction to technical direction, costuming to props, acting to writing, being involved on so many levels has helped him officiate in the positions he currently holds as Artistic Director of BoHo Theatre. Steve has performed at or worked with Marriott's Lincolnshire Theatre, Pheasant Run Dinner Theatre, Court Theatre, and Stage Right Theatre, to name a few. His works as director and/or designer for BoHo include the critically acclaimed hit musicals *The Wild Party*, the Jeff-winning *SideShow*, *Jekyll & Hyde*, and *The Glorious Ones*, and the plays *I Am My Own Wife* (co-director) and *Gross Indecency: The Three Trials of Oscar Wilde*. Thank you to Tom for not only being the glue that holds all of this together, but for being the absolute rhythm of my heart.

## **CHRISTINE FERRITER | LIGHTING DESIGNER**

Christine is thrilled to be working with BoHo where she previously designed *Art*, *The Wild Party*, *A Winter's Tale* and *M. Butterfly*. Recently she designed the lighting for *Twelve Angry Men* at Raven Theatre, *The Fantasticks* for Promethean Theatre Ensemble, and for Lucid Anatomy's *Gone or Who Is It That Can Tell Me Who I Am*. Upcoming projects include *Spring Awakening* with Promethean and *Ingenioso* with Circus Flora. She holds a BFA in Lighting Design from The Conservatory of Theatre Arts at Webster University.

## RICKY LURIE | COSTUME DESIGNER

Ricky is thrilled to be working with BoHo on such a great musical. His design have been seen at: American Blues Theater, City Lit, Halo Entertainment, Oak Park Festival, Village Players, Route 66, The Green House Theater, Profiles Theater, Porchlight Music Theater, Polarity Ensemble Theater, Skokie Park Players, North Central College, & Columbia College Chicago. Ricky has assisted at: Remy Bumppo, American Theater Company, Victory Gardens, Sinnerman, Pegasus Players, Live Bait Theater, The Gift. Graduate of Columbia College Chicago with a concentration in costume design. Thanks to all.



### COMPANY MEMBERS

<b>EXECUTIVE DIRECTOR</b> .....	Thomas J. Samorian
<b>ARTISTIC DIRECTOR</b> .....	Stephen M. Genovese
<b>ASSOCIATE ARTISTIC DIRECTOR</b> .....	Peter Robel
<b>MANAGING DIRECTOR</b> .....	Ryan Guhde
<b>INCOMING ARTISTIC DIRECTOR</b> .....	Peter Marston Sullivan
<b>ASSOCIATE EXECUTIVE DIRECTOR</b> .....	Peter Blair
<b>CASTING COORDINATOR</b> .....	Stephanie Sullivan
<b>BOARD/COMPANY SECRETARY</b> .....	Mary Kate Robel
<b>MEDIA DIRECTOR</b> .....	Charles Riffenburg IV
<b>BOARD</b> .....	Jean Zuiker, Robert Kimmeth
<b>ARTISTIC AFFILIATES</b> .....	Anthony Apodaca, Brenda Didier, Patrick Ham, Theresa Ham, Jon Steinhagen, A. Scott Williams, and John Zuiker

### SPECIAL THANKS

Special thanks go to Michael James for allowing BoHo the latitude to use this space as we will; the Illinois Arts Council, a state agency, the Richard H. Driehaus Foundation, the Gaylord and Dorothy Donnelley Foundation, and The Saints for all their financial and artistic support; Robert Kimmeth and Jean Zuiker for the time and energy they take out their lives to make this company even better; BoHo company members who strive daily to make this a place where artists can learn, grow, and fulfill their dreams; and, anyone else who we may have neglected to thank at the time this was printed.

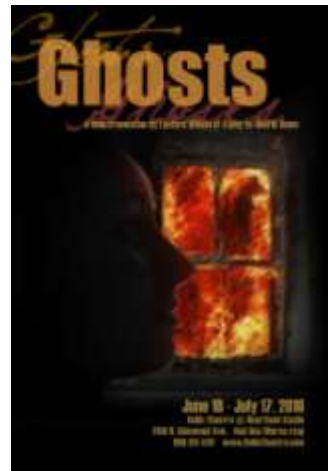
## COMING THIS SUMMER. . .

Join BoHo Theatre this June for Henrik Ibsen's powerful and controversial play about a family's struggle with infidelity, incest, disease, euthanasia, and the bonds and duties of love.

# GHOSTS

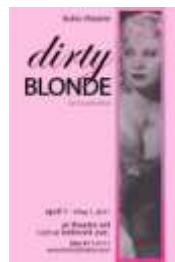
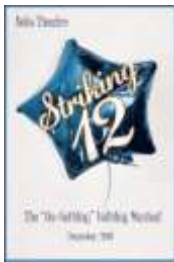
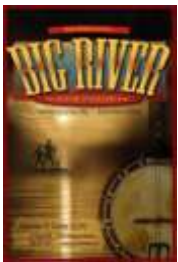
JUNE 18 – JULY 17, 2010

DIRECTED BY PETER MARSTON SULLIVAN



## AND JOIN US FOR BoHo's 2010/11 SEASON IN OUR NEW SPACE!!

BoHo Theatre is proud to announce that, beginning next season, we will be a resident at the recently renovated Theatre Wit space at 1229 West Belmont, formerly the Bailiwick Arts Center. Our new space will more than double our audience capacity, which is good because we hate turning people away from our shows. But fear not! We will be maintaining our presence here at the Heartland Studio in Roger's Park as a venue for special events, rehearsals, our own shows (including next season's holiday show *Striking Twelve*), and for showcasing other up-and-coming theatre companies. Won't you join us?



For more information on our upcoming shows and season and to purchase a season subscription, visit us online at [www.bohotheatre.com](http://www.bohotheatre.com)!

**Bohemian Theatre Ensemble** is a not-for-profit 501 (c) 3 organization. Our events and productions are made possible by your generous donations and patronage. Please visit our website at [www.bohotheatre.com](http://www.bohotheatre.com) or speak with our house manager to learn about more ways to contribute time, money, and talent to helping support art in Chicago. Any monetary donations are tax-deductible to the fullest extent of the law. Thank you!