

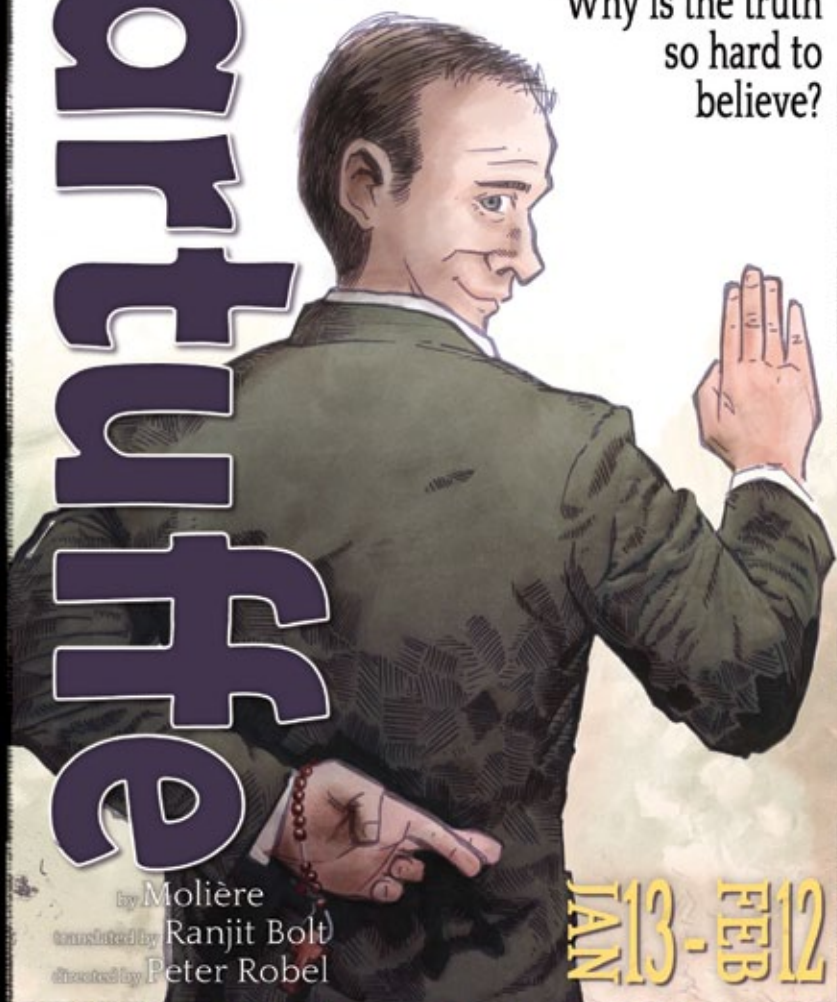


BOLDO

Truth Beauty Freedom Love

Tarantula

Why is the truth
so hard to
believe?



by Molière

translated by Ranjit Bolt

directed by Peter Robel

IAN 13 - FEB 12

Presented at Theater Wit, 1229 W Belmont Ave.



BoHo

Truth Beauty Freedom Rose
www.BoHoTheatre.com

MISSION & VISION

BoHo Theatre's mission is to create theatre that incorporates the arts as a whole — Art for art's sake. Our vision is to challenge convention through literary originality and eclectic expression while fostering an ever-evolving artistic environment in which people are inspired to learn, think, dream, and feel. To teach others and ourselves how to expand, create, and present art through theatre while reveling not only in the process, but also in the journey.

BOARD

Stephen M. Genovese, president;
Thomas J. Samorian, vice-president;
Kaela Altman; Steve Goodman;
Robert Kimmeth; Richard Maxen;
Bob Turner; Jean Zuiker

ARTISTIC AFFILIATES

Anthony Apodaca, Brenda Didier,
Patrick Ham, Theresa Ham,
Jon Steinhagen, A. Scott Williams,
and John Zuiker

COMPANY

ARTISTIC DIRECTOR
Peter Marston Sullivan

EXECUTIVE DIRECTOR
Peter Blair

ARTISTIC ADVISOR
Stephen M. Genovese

EXECUTIVE ADVISOR
Thomas J. Samorian

ASSOC. ARTISTIC DIRECTOR
Peter Robel

MANAGING DIRECTOR
Ryan Guhde

**MEDIA DIRECTOR &
GRAPHIC DESIGNER**
Charles Riffenburg^{IV}

CASTING ASSOCIATES
Stephanie Sullivan
Rebecca Mauldin

DEVELOPMENT COORDINATOR
Anna Hammonds

BOARD/COMPANY SECRETARY
Mary Kate Robel

**NEW WORKS &
SOCIAL MEDIA MANAGER**
Ariel Trocino

COMPANY MEMBER
Sean Thomas

BOHO THEATRE is a not-for-profit 501 (c) 3 organization. Our events and productions are made possible by your generous donations and patronage. Please visit our website at www.bohotheatre.com or speak with our house manager to learn about more ways to contribute time, money, and talent to helping support art in Chicago. Any monetary donations are tax-deductible to the fullest extent of the law. Thank you!

BoHo Theatre: Bohemian Theatre Ensemble
PRESENTS

TARTUFFE

By Molière
Adapted by Ranjit Bolt

FEATURING

(in alphabetical order)

VALERE	Chris Ballou
ELMIRE	Christa Buck
DAMIS	Luke Daigle
MME. PERNELLE	Daria Harper
FLIPOTE, LAURENT, MONSIEUR LOYAL, AND OFFICER	Andrew Marikis
CLEANTE	Michael Mercier
DORINE	Saren Nofs-Snyder
MARIANE	Devan O'Mailia
ORGON	Sean Thomas
TARTUFFE	Jeremy Trager

SCENIC DESIGN

Chad Bianchi

COSTUME DESIGN

Kate Setzer Kamphausen

LIGHTING DESIGN

Nick Belley

PROPERTIES DESIGN

Cassy Schillo

STAGE MANAGER

Meg Love

PRODUCTION MANAGERS

Tammy Goodman
Ryan Keller

DRAMATURG

Ariel Trocino

ASSISTANT DIRECTOR

Franki Jo Levinson

DIRECTED BY
Peter Robel

*Tartuffe in this translation was first performed at The Oregon Shakespeare Festival,
Libby Appel Artistic Director, Paul Nicholson, Executive Director.*

PARTIALLY SUPPORTED BY GRANTS FROM

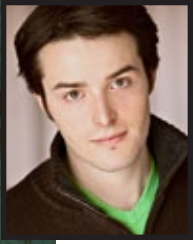


THE RICHARD
H. DRIEHAUS
FOUNDATION

ALPHAWOOD
FOUNDATION
CHICAGO

GAYLORD AND DOROTHY DONNELLEY FOUNDATION

PERFORMER BIOGRAPHIES



CHRIS BALLOU | VALERE

Chris is very excited to be making his BoHo debut. Most recently seen in Shakespeare's *Henry IV* and *V* at Oak Park Theatre and *The Cradle Will Rock* at CCPA where he's a BFA candidate in acting. Additionally seen as Romeo in *Romeo and Juliet*, Edmund in *King Lear*, and Marius in *Les Miserables*. Chris would like to thank BoHo for this experience, his family, and everyone who has supported him on the way.



CHRISTA BUCK | ELMIRE

Christa is thrilled to return to BoHo. She appeared in last year's highly acclaimed *Big River* as the Widow Douglas and Aunt Sally. Other Chicago credits include *Gypsy* (Tessie Tura), *Miracle on 34th Street* (Doris Walker), *Company* (April), all with Porchlight; *James Joyce's The Dead* (Lily) with Court Theatre; *The Cradle Will Rock* (Sadie/Sister Mister) with TimeLine. Thanks to the three Peters, and to Thom, Charlotte and Max for unwavering support, especially when mommy has to go to rehearsal.



LUKE DAIGLE | DAMIS

Luke is delighted to return to BoHo after his debut last summer in *Icarus*. Recent credits include *Mourning Becomes Electra* (Remy Bumpo), *The Real Thing* (Illinois Theatre Center), *Shakespeare's R & J* (Journeymen), *Picasso at the Lapin Agile* and *Moon Over Buffalo* (Saint Sebastian Players). Other credits span Idaho, Montana, and Virginia which include *Waiting for Godot*, *The Tempest*, *Two Gentlemen of Verona*, *Much Ado About Nothing*, *A Flea in Her Ear*, and *Wit* to name a few. Luke earned a B.F.A. in performance from the University of Idaho. He thanks his family and the Cikaneks for their continual love and support.



DARIA HARPER | MME. PERNELLE

Daria is newly arrived on Chicago's theatre scene and is thrilled to work with BoHo for the first time. Her first Chicago performance was as Marthy in the recent production of *Anna Christie* with Rendition Theatre at Act One Studio. In recent years she has been seen in roles such as Stevie in *The Goat*, Amanda in *The Glass Menagerie*, and Bella in *Lost in Yonkers* in Charlottesville, VA. She has a BFA from Carnegie Mellon University, an MFA from the University of Virginia and is a Certified Alexander Technique Teacher, training in London in 1980, and has now has opened her Alexander practice in Chicago.

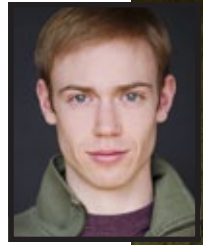


ANDREW MARIKIS | FLIPOTE, LAURENT, MONSIEUR LOYAL, AND OFFICER

Andrew is excited to return to the warm and wonderful people at BoHo for *Tartuffe!* Some of his favorite Chicago roles include Mr. Gallagher in Seanachai's *Shadow of a Gunman*, The Men in The Artistic Home's *Marisol*, and King Alonso in BoHo's *The Tempest* among others. Other regional credits include *Arsenic and Old Lace* at Great Lakes Theatre Festival and *Measure for Measure* at Cleveland Public Theatre. He'd like to thank his family, Dauphne, Kathy and Victor for the mentoring and support.

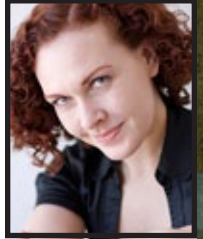
MICHAEL MERCIER | CLEANTE

Michael is thrilled to join BoHo again, where he last performed last year in *The Elephant Man*. Elsewhere in Chicago, Michael has worked with 16th Street Theater, The Strange Tree Group, Sideshow Theatre Company, and Prologue Theatre Company. He is also a proud company member of Two Pence Shakespeare and Vintage Theater Collective. Michael is a graduate of the University of Minnesota/Guthrie Theater BFA Actor Training Program



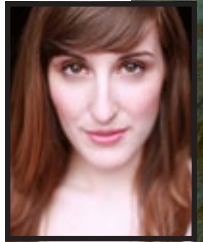
SAREN NOFS-SNYDER | DORINE

Saren is pleased to be working with BoHo again, having previously been seen as Mrs. Helen Alving in *Ghosts*. In Chicago, she has worked with Lookingglass, Chicago Shakespeare, Piven Theatre Ensemble, Next, First Folio, Remy Bumppo, and many others. Some favourite roles include Masha in *Three Sisters*, Helena Charles in *Look Back in Anger*, Beatrice in *Much Ado About Nothing*, Jean in *Ecstasy*, and Mae in *Once in a Lifetime*. Ms. Nofs-Snyder earned an MFA in Acting from The University of Missouri, Kansas City (UMKC), and has a resume severely lacking in Tennessee Williams. Should you be directing a Williams piece soon, please contact her agent, Dawn, at Gray Talent Group. Love to Matt.



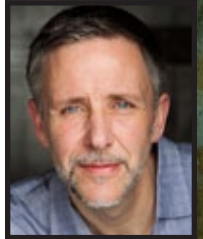
DEVAN O'MAILIA | MARIANE

Devan just moved to Chicago last March, and is thrilled to make her Chicago premiere by joining the cast of *Tartuffe* with BoHo. Originally from Ohio, Devan is a recent graduate of Ball State University in Indiana, where she earned her BA in Musical Theatre. Past favorite shows include *Taming of the Shrew*, *Cymbeline*, *Daughters of Trinity* (World Premiere), *Hair*, and *Songs for a New World*. Many thanks to Peter for the amazing opportunity!



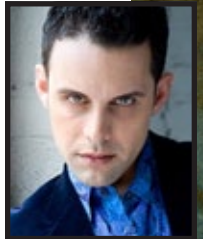
SEAN THOMAS | ORGON

New York and National Tour credits include: *Phantom of the Opera*, *Les Miserables* (Broadway and National Tour), *The Lion*, *The Witch and The Wardrobe* (Promenade Theatre and National Tour), *Three Tall Women* (Vineyard Theatre at The Promenade) and *The Threepenny Opera* (Lucille Lortel). Chicago credits include: *The Hot L Baltimore* (Stepenwolf), *Ghosts* (BoHo Theatre), *Big River* (BoHo Theatre), *Wreckage* (Caffeine Theatre) and *The King and I* (Porchlight). Sean can be seen next in the Spring of 2012 at Red Tape Theatre as The Ringmaster in *Elephant's Graveyard*. He is a proud company member of BoHo Theatre.



JEREMY TRAGER | TARTUFFE

Jeremy is happy to be working with BoHo for the first time. His credits include *Some Enchanted Evening*, *Chess* (Anatoly—Jeff Nomination & Broadway World Award), *Evita* (Peron), *Cabaret* (The Emcee—Jeff Award), and *Flora the Red Menace* (Harry - Jeff Nomination & After Dark Award) with Theo Ubique; *Boojum!* (Lewis Carroll—Jeff Nomination) with Caffeine/Chicago Opera Vanguard; *Carousel* (Jigger) with Light Opera Works, *1776* (Rutledge) with Signal; *Ragtime* (Houdini), *Sweeney Todd*, *Amadeus*, and *Assassins* with Porchlight; and productions with Bailiwick, Profiles, Circle, European Rep, and many more. He thanks Peter for this opportunity, his parents for their support, and his acting teachers, Susan Hart and Jeffrey Carlson, for changing everything.



PRODUCTION CREW BIOGRAPHIES

MOLIÈRE | PLAYWRIGHT

A French playwright, actor, and director, Molière cofounded the troupe known as the Illustre Théâtre soon after leaving home and toured the French provinces (1645–58), writing plays and acting in them. After his troupe was established in a permanent theatre in Paris under the patronage of Louis XIV, he won acclaim in the court and among bourgeois audiences for his comedy *The Affected Young Ladies* (1659). His other major plays include *The School for Wives* (1662), *Tartuffe* (1664; initially banned by religious authorities), *The Misanthrope* (1666), *The Miser* (1669), *The Bourgeois Gentleman* (1670), and *The Imaginary Invalid* (1673). His plays compose a portrait of all levels of 17th-century French society and are marked by their good-humored and intelligent mockery of human vices, vanities, and follies.

RANJIT BOLT | ADAPTOR

Ranjit Bolt is a British playwright and translator. Born in Manchester and educated at Perse School and at Balliol College, Oxford, he worked as a stockbroker for eight years before entering the world of play translation in 1990. His modern-language translations include *The Real Don Juan*, *Lysistrata*, *Cyrano de Bergerac*, *Hercules* from the work by Seneca; *The Art of Seduction* from *La Double Inconstance* by Marivaux; *The Marriage of Figaro*, and *Mirandolina*, as well as many translations of Molière's works. He has also published a novel in verse, *Losing It*, and a verse translation for children of the fables of *La Fontaine*, *The Hare and the Tortoise*. He was awarded the OBE in 2003 for services to literature.

PETER ROBEL | DIRECTOR

Peter is pleased to be directing for BoHo once again, where he previously directed *The Tempest*, *The Merchant of Venice*, *Yerma*, and *The Winter's Tale*. BoHo audiences may also recall his Jeff-Nominated performance as Charlotte von Mahlsdorf (and 35 other characters) in *I Am My Own Wife*. As an actor, Peter has appeared on many Chicago-area stages, and is a proud member of Actors' Equity Association. In addition, he serves as BoHo's Associate Artistic Director. Dedicated to MK!

FRANKI JO LEVINSON | ASSISTANT DIRECTOR

Franki is thankful for the wonderful opportunity to work with BoHo Theatre. Having most recently stage managed Henrik Ibsen's *Brand* at Red Tape Theatre, Franki will head back down Belmont to finish out their season with *Elephant's Graveyard* this spring. For Papa, the funniest person I know.

ARIEL M. TROCINO | DRAMATURG

Ariel is the New Works and Social Media Manager for BoHo Theatre. She graduated from Albright College with a BA in Theatre. Ariel has worked as a literary management intern for Florida Studio Theatre, an education artist with Maryland Shakespeare Festival, and as a dramaturg and actor with various theatre companies in Chicago.

CHAD BIANCHI | SCENIC DESIGN

Chad Bianchi is a few months old to Chicago and thrilled to be working for the first time with BoHo! Previous Chicago work was on *The Elephant Man* with St Sebastian Players. Past designs include *Six Characters in Search for an Author*, *Much Ado About Nothing*, *Romance*, *West Side Story*, and *Savage/Love*. He can be viewed in the wild working on designs at New Wave in Logan Square or his next show *Drawer Boy* with Filament Theatre.

NICK BELLEY | LIGHTING DESIGN

Chicago design credits include: *Tartuffe*, *Synergy*, *The Lonely Soldier Monologues*, *Normal*, *Acı*, *Galatea e Polifemo*. Assistant: *Snapshots*, *Pinkalicious: The Musical*, *Precious Little*, *Working*. Nick is currently working on his BFA at The Theatre School at DePaul University. www.nickbelley.com.

KATE SETZER KAMPHAUSEN | COSTUME DESIGN

Kate is a pink-haired Southern grrl who lives on the north side of Chicago with four cats and many sewing machines. In the last decade, she has costumed Shakespeare, mob films, drag queens, and bunraku puppets, with *Hell in a Handbag*; *Porchlight*; *Lifeline*; *BoHo*; and others. She adores muppets and is thrilled to be working once again in the steampunk world of *BoHo Theatre!*

CASSY SCHILLO | PROPERTIES DESIGNER

It is a pleasure to be returning to *BoHo's* company for *Tartuffe!* Recently earning a BFA from University of Wisconsin-Whitewater, she is excited to continue that passion in Midwest theatres. Recent credits include Properties Master for Marriott's *Aladdin*, Asst. Properties Master for Remy Bumppo's *Mourning Becomes Electra*, and Production Stage Manager for *BoHo's Striking 12*.

MEG LOVE | STAGE MANAGER

Meg is so very excited to be back at *BoHo!* After stage managing *Songs for a New World* in the runs at Theatre Building and Theatre on the Lake, *Bernarda Alba*, *La Cage Aux Folles*, *The Glorious Ones*, *Hello Again*, *Dirty Blonde*, and *Icarus*, Meg is proud to be part of another terrific *BoHo* production. She'd like to thank the wonderful production team and cast for a great experience. She also extends her deepest gratitude to her family, friends, and Dan for all their love and support.

TAMMY GOODMAN | PRODUCTION MANAGER

Tammy is thrilled to be working with *BoHo* again! She started as an intern in 2008, and moved on to assist with the fabulous wigs for *La Cage Aux Folles*. Most recently, she served as the production manager for *Pippin*. She also stage managed and was the lighting assistant for *Dearly Departed* at Theater in the Woods this past July. Tammy graduated this past May from Occidental College with a B.A. in Theater. She would like to thank her family, friends, and her *BoHo* family for all of their love and support!

RYAN KELLER | PRODUCTION MANAGER

Ryan is excited be joining *BoHo* once again, having just finished stage managing *Striking 12!* He will be graduating from Illinois State University this spring with degrees in Theatre Design/Production and Theatre Management, and pursuing an MFA in Stage Management. Recent credits include Illinois State Dance Theatre, *Mother Justice*, and *Rock & Roll*.



SPECIAL THANKS

Theater Wit for welcoming us; The Marriott Theatre: Terry James, Andy Hite, Aaron Thielen, Margaret Newton, Rob Rahn; Rick Julien; Peter Coombs Photography; Cooper's; La Gondola Restaurant; Brandon Dahlquist.

The Illinois Arts Council, a state agency; the Richard H. Driehaus Foundation; the Gaylord and Dorothy Donnelley Foundation; the Alphawood Foundation; the Arts & Business Council of Chicago; ArtsWorks Fund for Organizational Development; The Saints for their financial and artistic support (and for helping us find our seats); and generous matching donations from Jim Beam and Takeda Pharmaceuticals.

The BoHo Board of Directors and Company members who strive daily to make this a place where artists can learn, grow and fulfill their dreams.



YOU ARE A NECESSARY PART OF THE ART

Even though BoHo Theatre is a critically-acclaimed arts organization, with **11 Jeff Awards and 40 nominations**, we remain a small neighborhood theatre and ticket sales cover only a portion of our operating budget.



Director Peter Marston Sullivan and choreographer Brenda Didier in rehearsal with the cast of BoHo's *Pippin*.



Your donations go directly to sponsoring a position or element within a BoHo production. You receive thanks directly alongside the position or element you sponsor in BoHo programs and promotional materials!

ADOPT A DIRECTOR, DESIGNER, OR CAST TODAY!

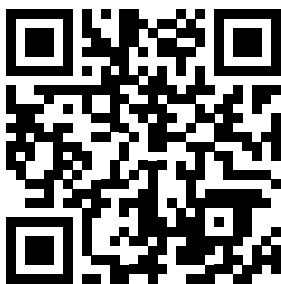
Adopt a performer for as little as \$200, a director for as little as \$500, or adopt an entire production starting at \$2000. Smaller donations can even sponsor specific props and costumes.

Visit us online or connect with your house manager to find out how we can design the perfect sponsorship package for you!

www.BoHoTheatre.com

STAY ENGAGED DURING INTERMISSION WITH THE TARTUFFE BACKSTAGE PASS!

Go behind the scenes of BoHo's *Tartuffe* with BoHo's Backstage Pass online. Get exclusive interviews and insights from the artists and actors creating the play, read up on the steampunk genre, and explore the political and social forces at work when the play was written.



Use the QR Code to access the Backstage Pass on your mobile phone, or read up online at:

www.BoHoTheatre.com/backstagepass



Cooper's
A Neighborhood Eatery

Located just across the street from
Theater Wit!
1232 W. Belmont Ave.
773.929.2667
www.cooperschicago.com

SHOW
YOUR
BOHO
THEATRE
TICKET
STUB FOR
A 10%
DISCOUNT
ON FOOD!



MISSION: SMART ART

Theater Wit dedicates itself to producing plays that address contemporary issues with humor and intelligence. With groundbreaking new plays and classic works, Theater Wit seeks to engage its audiences with wit and wisdom.

Now a year at our newly renovated 3 theater complex, Theater Wit strives to create a welcoming and professional home for the neighborhood to experience Chicago's diversely talented theater scene.

MORE THEATER. MORE!!!

Take full advantage of all the productions and companies at Theater Wit

MEMBERSHIP

With a Theater Wit Membership, you can see as many plays as you want, year round, for \$36/month:

- » Reserve a seat at any production in our facility. Do it in advance or just drop by on impulse.
- » Free ticket exchanges and replacement tickets.
- » Attend as many different shows as you want each month. Come once, twice or five times a week at no additional charge.
- » No initiation or startup fee, but members must agree to a three-month minimum.
- » Twice a year, bring a friend for free.

FLEXPASS

Theater Wit's FlexPass allows you see anything in the building at a dramatically reduced price:

- » Your FlexPass gives you 10 tickets for any shows at Theater Wit to be used any way you want for only \$200. See 10 shows, go on 5 dates or just bring your 9 closest friends with you to a show.
- » After ordering, you get a card in the mail within a week with your FlexPass code which can be used online, over the phone or at the box office.

RESIDENT AND VISITING SHOWS THIS WINTER AT THEATER WIT

Bohemian Theatre Ensemble
Tartuffe
January – February

Griffin Theatre Ensemble
Punk Rock
January – March

Theater Wit
The North Plan
February – April

Stage Left
The Fisherman
February – March

Theater Mir
The Sea
March – April

Bohemian Theatre Ensemble
The Rainmaker
April – May

Theater Wit
Tigers Be Still
April – May

Stage Left
Leapfest 9
May – June

THEATER WIT STAFF

Jeremy Wechsler.....*Artistic Director*
David Wechsler.....*Company Manager*
Mercedes Rohlfs.....*Grant Director*
Mikey Laird*Box Office Manager*
Josh Nordmark.....*Box Office*
Majel Cuza*Bar Manager*
Ryan Wesneski*Bar*
Jennifer Howard, Caitlin Body
Interns
Jay Kelly, L.C. Williams & Assocs
Press Relations

BOARD OF DIRECTORS

Kathryn Stieber*President*
Paul Danao*Vice-President*
Charles Hornewer*Treasurer*
Todd Goldberg
Neal Smyth
Bruce Wechsler

With so much going on at Theater Wit, we recommend you get our e-newsletter to keep up. Get updated news on our resident companies, pre-production insights, interviews and photos. You can also be our bestest ever e-pals by visting us at [facebook.com/theaterwit](https://www.facebook.com/theaterwit).

Fill out a mailing list insert and give to any bartender, usher or house manager to get a free piece of chocolate, or sign up online at theaterwit.org/join.

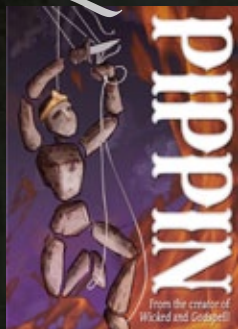


BOHO THEATRE'S 2011/12 SEASON

Here at BoHo Theatre, our seasons are anchored by the Four Pillars of our Bohemian Values: **Truth, Beauty, Freedom, and Love**. Each show in our season is chosen to represent one of these pillars by highlighting that theme within its production.

Join us in exploring these values in our 2011/12 Season in residence at Theater Wit.

Love



PIPPIN

by Stephen Schwartz
and Roger O. Hirson
Directed by P. Marston Sullivan
Choreographed by Brenda Didier
Oct 14 – Nov 13, 2011

Truth



TARTUFFE

by Molière
Adapted by Ranjit Bolt
Directed by Peter Robel
Jan 13 – Feb 12, 2012



THE RAINMAKER
by N. Richard Nash
Directed by Stephen Genovese
April 6 – May 6, 2012



FLOYD COLLINS
by Tina Landau
and Adam Guettel
Directed by P. Marston Sullivan
June 15 – July 15, 2012

Beauty

Freedom

WWW. BOHOTHEATRE.COM
THEATER WIT BOX OFFICE 773-975-8150