



MISSION & VISION

BoHo Theatre's mission is to create theatre that incorporates the arts as a whole — Art for art's sake. Our vision is to challenge convention through literary originality and eclectic expression while fostering an ever-evolving artistic environment in which people are inspired to learn, think, dream, and feel. To teach others and ourselves how to expand, create, and present art through theatre while reveling not only in the process, but also in the journey.

BOARD

Stephen M. Genovese, president;
Thomas J. Samorian, vice-president;
Kaela Altman; Steve Goodman;
Robert Kimmeth; Richard Maxen;
Bob Turner; Jean Zuiker

ARTISTIC AFFILIATES

Anthony Apodaca, Brenda Didier,
Patrick Ham, Theresa Ham,
Jon Steinhagen, A. Scott Williams,
and John Zuiker

Bohemian Theatre Ensemble is a not-for-profit 501 (c) 3 organization. Our events and productions are made possible by your generous donations and patronage. Please visit our website at www.bohotheatre.com or speak with our house manager to learn about more ways to contribute time, money, and talent to helping support art in Chicago.

COMPANY

ARTISTIC DIRECTOR
Peter Marston Sullivan

EXECUTIVE DIRECTOR
Peter Blair

ARTISTIC ADVISOR
Stephen M. Genovese

EXECUTIVE ADVISOR
Thomas J. Samorian

ASSOC. ARTISTIC DIRECTOR
Peter Robel

MANAGING DIRECTOR
Ryan Guhde

MEDIA DIRECTOR
Charles Riffenburg IV

CASTING ASSOCIATES
Stephanie Sullivan
Rebecca Mauldin

BOARD/COMPANY SECRETARY
Mary Kate Robel

NEW WORKS & SOCIAL MEDIA MANAGER
Ariel Trocino

COMPANY MEMBERS
Anna Hammonds
Sean Thomas

HELP US BRING ART TO THE STAGE

While BoHo Theatre has been critically acclaimed, with **11 Jeff Awards and 40 nominations**, we remain a small neighborhood theatre and ticket sales cover only a portion of our operating budget. Through your generous donations, you can ensure that critical elements of the art appear on BoHo's stage.

Your donations go directly to sponsoring a position or element within a BoHo production. You receive thanks directly alongside the position or element you sponsor in BoHo programs and promotional materials!

ADOPT A DIRECTOR, DESIGNER, OR CAST TODAY!

Visit us online or connect with your house manager after the show to find out how we can design the perfect sponsorship package for you!



Andrew Mueller and Brian-Alwyn Newland in BoHo's *Big River*.

BECOME A PART OF THE ART!

BoHo Theatre is growing quickly! Now in our eighth season, we are a resident company at Theater Wit, which increases our capacity and visibility, as well as maintaining our home at the Heartland Studio for new works, rehearsals, and to foster up-and-coming young theatre companies. As part of our transition, we are actively seeking board members to join our outgoing and artistic family.

For more information on becoming a board member and helping to bring art to the stage, visit us online at: www.bohotheatre.com/jointheboard



Anne Sheridan Smith in BoHo's *Dirty Blonde*.

CONTINUING GRATITUDE

Thank you to Michael James for allowing BoHo the latitude to use this space as we will; our generous funding organizations; The Saints for their financial and artistic support; BoHo board and company members who strive daily to make this a place where artists can learn, grow, and fulfill their dreams; and, anyone else who we may have neglected to thank at the time this was printed. Extra special thanks to Brandon Dahlquist Photography.

BoHo
Truth Beauty Freedom Love

Striking 12

The "Un-Holiday"
Holiday Musical

by Brendan Milburn,
Rachel Sheinkin & Valerie Vigoda
Directed by Lara Filip
Musical Direction by Diana Lawrence

PARTIALLY SUPPORTED BY GRANTS FROM



GAYLORD AND DOROTHY DONNELLEY FOUNDATION

www.BoHoTheatre.com



PERFORMERS & PRODUCTION CREW

MATT DEITCHMAN | KEYBOARD

Matt, a senior at Northwestern University, is so excited to be making his debut with Bohemian Theater Ensemble. Chicago credits include: *Murder for Two* at Chicago Shakespeare Theater (u/s The Suspects) and *Girls vs. Boys* at The House Theatre of Chicago. Huge thanks to the team for having him on this holiday journey! Love to Mom and Dad.



JED FEDER | PERCUSSION

Jed makes his BoHo debut with *Striking 12*. He is a recent graduate of Northwestern University, where he studied Radio/TV/Film and Music Composition and performed with the Northwestern drumline, Boomshaka dance/rhythm ensemble, and X-Factors a cappella. Recent Chicago credits include Open Door Repertory Company's *Smokey Joe's Cafe* (cast) and Provision Theater's *Godspell* (drumset). Favorite Northwestern acting and percussion credits include David Bell's *A Midsummer Night's Dream*, Bell's *Waa-Mu: What's Next?*, and Betsy Quinn's *Jungalbook*. He thanks everyone at BoHo and his family.



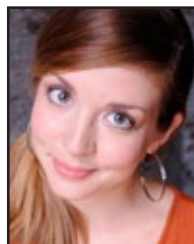
MALLORY NEES | GUITAR, BASS

Mal is thrilled to be returning to BoHo to reprise *Striking 12!* Since graduating from The Theatre School at DePaul, Mallory has worked with several great theater companies: Theatre-Hikes (*Sleepy Hollow*, also directed by the lovely Lara Filip), Strawdog (*The Good Soul of Szechuan*), Rivendell (*Mercury 13*), The (a) Symmetry Cycle (*blindsight*), 16th Street (*Menorca*), Theatre Mir (*Caucasian Chalk Circle*), and Lifeline Theatre (*Dooby Dooby Moo*, *The Last of the Dragons*, *The Blue Shadow*, *Mrs. Caliban*, *Nowhere*, and *Click, Clack, Moo*). If you're dying to hear more from Mallory, she accompanies various cabaret acts around town, and is a regular performer at Collaboration's ongoing dating show *Looking for Love*.



AMY STEELE | VIOLIN

Amy is thrilled to be back with BoHo for another holiday season! She has her degree in vocal performance from Indiana University. Favorite Chicago credits include *The Fantasticks* (Steel Beam Theatre), *Little Women* (JPAC), *Shout* (Drury Lane Water Tower), *The American Girl Revue* (American Girl Place), and *Urinetown* (Mercury Theatre). Love and thanks to all... especially her family and her grandmothers.



LARA FILIP | DIRECTOR

Lara is thrilled to return to BoHo for the 2nd annual *Striking 12* extravaganza! Previously, she adapted and directed Sophocles' *Electra* for BoHo. She has also directed and/or written works for Theatre-Hikes, the now defunct Theatre Building "Stages," Metropolis, and Pheasant Run. She is an Artistic Associate for Porchlight Theatre, an Artistic Director of Arranmore Center for the Arts in Oswego, and the Founder/Director of Bookworm Adventures, which tours her plays for young audiences to schools and libraries. As an actress, Lara has been seen in featured roles at The Paramount Theatre, Marriott Theatre, Drury Lane Theatres, Ravinia, The Royal George and many others. As a singer/songwriter, her band project, Birdie Wing, is in pre-production for its debut album.

DIANA LAWRENCE | MUSIC DIRECTOR

Diana is a Chicago pianist, music director, singer and songwriter. Favorite past music direction credits include *The Mistress Cycle* with Apple Tree Theatre and The Second City's *A Girl's Guide to Washington*. This fall, Diana toured the east coast promoting the debut record from her band, *Diana & the Dishes* (dianaandthedishes.com). In the coming months, she will be music directing Porchlight Music Theatre's *tick, tick... BOOM!* Love to my family and B.

BRENDAN MILBURN | BOOK, MUSIC, AND LYRICS

Brendan graduated from Pomona College and NYU's MFA program in Musical Theatre Writing. He does a lot of arranging for the band GrooveLily, and he's an accomplished record producer as well. Along with his wife and longtime collaborator, Valerie Vigoda, Brendan is a 2009 winner of the ASCAP Foundation Richard Rodgers New Horizons Award, as well as a two-time winner of the Jonathan Larson Award for Excellence in Writing for the Theatre. Other credits include *Toy Story The Musical*, *Sleeping Beauty Wakes*, *Wheelhouse*, *Long Story Short*, *A Midsummer Night's Dream* (a musical adaptation of Shakespeare's play), and *Ernest Shackleton Loves Me*.

RACHEL SHEINKIN | BOOK AND LYRICS

Rachel's other theater music collaborations include *The 25th Annual Putnam County Spelling Bee*, for which she won the 2005 Tony Award for Best Book for a Musical; *Blood Drive* (O'Neill National Music Theatre Conference) and *Serenade* (Baryshnikov Arts Center). She has been a Manhattan Theatre Club playwriting fellow and is currently an adjunct faculty member at NYU's Graduate Musical Theatre Writing Program.

VALERIE VIGODA | BOOK, MUSIC, AND LYRICS

Originally from McLean, VA, Valerie is a classically-trained musician, honors graduate of Princeton University, and former Army lieutenant. She has toured the world with Cyndi Lauper (opening for Tina Turner and Cher), Joe Jackson, and the Trans-Siberian Orchestra. She founded the band GrooveLily in 1994. Along with her husband and longtime collaborator Brendan Milburn, Valerie is a 2009 winner of the ASCAP Foundation Richard Rodgers New Horizons Award, as well as a two-time winner of the Jonathan Larson Award for Excellence in Writing for the Theatre. Other credits include *Toy Story The Musical*, *Sleeping Beauty Wakes*, *Wheelhouse*, *Long Story Short*, *A Midsummer Night's Dream*, and *Ernest Shackleton Loves Me*.

SALLY WEISS | SCENIC & LIGHTING DESIGNER

Sally is returning to BoHo Theatre after designing *Icarus* earlier this year. Sally is a scenic and lighting designer in Chicago and has worked with The Side Project, The Marriott Theatre, and Drury Lane Oakbrook. Sally received her B.A. in Theatre from the University of Maryland and recently finished the M.F.A. Stage Design program at Northwestern. She is a proud member of New Suit Theatre Company. See examples of her work at www.sallyweissdesign.com.

CASSY SCHILLO | PRODUCTION STAGE MANAGER

Cassy is pleased to be returning to BoHo's company for *Striking 12!* Recently earning a BFA in Stage Management from University of Wisconsin-Whitewater, she is excited to continue that passion in Midwest theatres. Recent credits include Stage Manager/Properties Master for BoHo's *Pippin* and Stage Manager/Sound Designer for The Verge's production of *Look Back in Anger*.

RYAN KELLER | STAGE MANAGER

Ryan is excited to be joining BoHo on *Striking 12* once again! He will be graduating from Illinois State University this spring with degrees in Theatre Design/Production & Theatre Management, and pursuing an MFA in Stage Management. Recent credits include Illinois State Dance Theatre, *Mother Justice*, and *Rock & Roll*.

BoHo's MAINSTAGE SEASON



TARTUFFE

by Molière
Adapted by Ranjit Bolt
Directed by Peter Robel

An 18th century classic gets a steampunk slant in this exiting modern-language translation about lies, sex, and the power of persuasion.

OPENING
JANUARY 13, 2012
AT THEATER WIT,
1229 W BELMONT

Love



PIPPIN
Oct 14 – Nov 13, 2011

Beauty



THE RAINMAKER
April 6 – May 6, 2012

Freedom



FLOYD COLLINS
June 15 – July 15, 2012

Striking 12 is presented through special arrangement with and all authorized performance materials are supplied by Theatrical Rights Worldwide (TRW), 570 Seventh Avenue, Suite 2100, New York, NY. 10018. (866) 378-9758 www.theatricalrights.com. The videotaping or audio recording of this performance is