



BOLDO

Truth Beauty Freedom Love



From the
creator of
Wicked and
Godspell!

PIPPI

music and lyrics by
Stephen Schwartz
book by
Roger O. Hirson
directed by
Peter Marston Sullivan

OCT 14 - NOV 13

Presented at Theater Wit, 1229 W Belmont Ave.



BoHo

Truth Beauty Freedom Rose
www.BoHoTheatre.com

MISSION & VISION

BoHo Theatre's mission is to create theatre that incorporates the arts as a whole — Art for art's sake. Our vision is to challenge convention through literary originality and eclectic expression while fostering an ever-evolving artistic environment in which people are inspired to learn, think, dream, and feel. To teach others and ourselves how to expand, create, and present art through theatre while reveling not only in the process, but also in the journey.

BOARD

Stephen M. Genovese, president;
Thomas J. Samorian, vice-president;
Kaela Altman; Steve Goodman;
Robert Kimmeth; Richard Maxen;
Bob Turner; Jean Zuiker

ARTISTIC AFFILIATES

Anthony Apodaca, Brenda Didier,
Patrick Ham, Theresa Ham,
Jon Steinhagen, A. Scott Williams,
and John Zuiker

COMPANY

ARTISTIC DIRECTOR
Peter Marston Sullivan

EXECUTIVE DIRECTOR
Peter Blair

ARTISTIC ADVISOR
Stephen M. Genovese

EXECUTIVE ADVISOR
Thomas J. Samorian

ASSOC. ARTISTIC DIRECTOR
Peter Robel

MANAGING DIRECTOR
Ryan Guhde

MEDIA DIRECTOR
Charles Riffenburg IV

CASTING COORDINATOR
Stephanie Sullivan

CASTING ASSISTANT
Rebecca Mauldin

BOARD/COMPANY SECRETARY
Mary Kate Robel

NEW WORKS MANAGER
Ariel Trocino

COMPANY MEMBERS
Anna Hammonds
Sean Thomas



BOHO THEATRE is a not-for-profit 501 (c) 3 organization. Our events and productions are made possible by your generous donations and patronage. Please visit our website at www.bohotheatre.com or speak with our house manager to learn about more ways to contribute time, money, and talent to helping support art in Chicago. Any monetary donations are tax-deductible to the fullest extent of the law. Thank you!

BoHo Theatre: Bohemian Theatre Ensemble
PRESENTS

PIPPIN

Book by Roger O. Hirson

Music & Lyrics by Stephen Schwartz

Originally produced on the Broadway stage by Stuart Ostrow

Directed on the Broadway stage by Bob Fosse

FEATURING

Shaun Nathan Baer
as PIPPIN

Travis Porchia
as LEADING PLAYER

WITH

Michael Kingston as
Jenny Lamb as
Dana Tretta as
Gabriel Stern as
Sawyer Smith as

CHARLEMAGNE
FASTRADA
CATHERINE
THEO
LEWIS

AND THE PLAYERS

Kelsey Andres
Leslie Allison Smith

Christopher Logan
Sawyer Smith

Maggie Portman
Daniel Spagnuolo

SCENIC DESIGN

John Zuiker

COSTUME DESIGN

Bill Morey

LIGHTING DESIGN

Christopher Burpee

STAGE MANAGER/ PROPERTIES DESIGN

Cassy Schillo

CHOREOGRAPHY

Brenda Didier

MUSIC DIRECTION

Nick Sula

DIRECTED BY
Peter Marston Sullivan

Pippin is presented through special arrangement with Music Theatre International (MTI).

All authorized performance materials are also supplied by MTI.

421 West 54th Street, New York, NY 10019 Phone: 212-541-4684 Fax: 212-397-4684 www.MTIShows.com

PARTIALLY SUPPORTED BY GRANTS FROM



THE RICHARD
H. DRIEHAUS
FOUNDATION

ALPHAWOOD
FOUNDATION
CHICAGO

GAYLORD AND DOROTHY DONNELLEY FOUNDATION

MUSICAL NUMBERS

ACT I

“Magic To Do”	Leading Player and Company
“Corner of the Sky”	Pippin
“War Is a Science”	Charlemagne, Pippin and Players
“Glory”	Leading Player and Players
“Corner of the Sky” reprise	Pippin
“Simple Joys”	Leading Player
“No Time at All”	Berthe and Players
“With You”	Pippin
“Spread a Little Sunshine”	Fastrada
“Morning Glow”	Pippin and Company

(There will be one 10-minute intermission)

ACT II

“Right Track”	Leading Player and Pippin
“Kind of Woman”	Catherine and Female Players
“Extraordinary”	Pippin
“Prayer for a Duck”	Pippin
“Love Song”	Pippin and Catherine
“Corner of the Sky” reprise	Pippin
“I Guess I’ll Miss the Man”	Catherine
“Finale”	Leading Player, Pippin, Theo and Company

Please note: Haze is used in this production.

ORCHESTRA

CONDUCTOR/ KEYBOARD	BASS/GUITAR	PERCUSSION	SYNTHESIZER
Nick Sula	Robert Potsic	Dustin Valenta	T.J. Anderson

PRODUCTION CREW

ASST. COSTUME DESIGN Kate Setzer Kamphausen	HAIR AND MAKEUP Scott Sowinski
ASST. STAGE MANAGER Adrian Juarez	ASST. DIRECTOR Anna Hammonds
PRODUCTION MANAGER Tammy Goodman	CARPENTER Rick Julien

PRODUCED BY
Peter Blair



PERFORMER BIOGRAPHIES

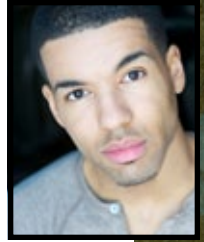
SHAUN NATHAN BAER | PIPPIN

Shaun is thrilled to make his BoHo debut with this production of *Pippin*. Local Credits include *The Double* (Adrian Young) - Babes With Blades; *Little Women: The Musical* (Laurie) - NightBlue Theatre; *Sunday in the Park With George* (Louis/Billy) - Porchlight Music Theatre. He is a co-founder of the Chicago based Catalyst Cabaret (www.catalystcabaret.com). Originally from Oak Park, Illinois, Shaun graduated from Illinois Wesleyan with a BFA in Musical Theatre. Love to JRO.



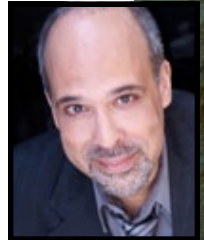
TRAVIS PORCHIA | LEADING PLAYER

Travis received his BA in Musical Theater Performance from Columbia College Chicago. His recent Chicago credits include *Meet John Doe* (Porchlight), *Girls VS. Boys* (House Theatre), and *Footloose!* (Theater at the Center). Travis' television credits include a principal role in the AT&T Uverse commercial "Boulevard", and a supporting role in Jennifer Hudson's music video "Where You At". Travis has also performed with Alphabet Soup Children's Theater and Theater at the Center's Theater for Young Audiences. He would like to thank his Mom, Dad, and family of friends for their constant love, energy and support!



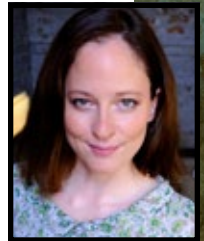
MICHAEL KINGSTON | CHARLEMAGNE

Michael is ecstatic to return to BoHo, having previously been seen as Carr Gomm in *The Elephant Man* and Georges in *La Cage Aux Folles*. Recent shows include *The Front Page*, *Frost/Nixon*, and the Jeff Award-winning *The Farnsworth Invention*, all for TimeLine Theatre. He has been nominated for a Jeff Award (Supporting Actor in a Musical) for his work in TimeLine's *Fiorello! An Artistic Associate* with Bailiwick Chicago, Michael has also worked with Hell In a Handbag, The Neo-Futurists, Griffin Theatre, Raven Theatre, Emerald City Theatre, and Porchlight Music Theatre. For Grandpa, Patricia, Dixie, and Thelma.



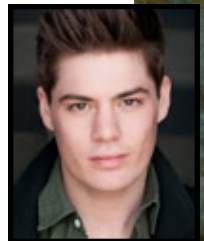
JENNY LAMB | FASTRADA

Jenny is thrilled to work with BoHo for the first time. She was last seen at the Black Ensemble Theatre in *All in Love is Fair* (Jenean). Favorite past credits include *The Lady's Not for Burning* (Jennet), *The Taming of the Shrew* (Kate), *Evita* (Peron's Mistress), *Jacques Brel's Lonesome Losers of the Night* (Whore) and *Cabaret* (Lulu) all with Theo Ubique Cabaret Theatre, as well as *Assassins* (Lynette "Squeaky" Fromme) with Boxer Rebellion and Andre Gregory's *Alice in Wonderland* (Alice) with Blindfaith Theatre. Jenny is co-founder and co-Artistic Director of Li'l Buds Theatre Company (www.lilbudstheatre.org). Check out their upcoming holiday show—*Tinsel! The Musical*.



SAWYER SMITH | LEWIS, PLAYER

Sawyer is thrilled to be making his Chicago acting debut with BoHo Theatre. Sawyer is a recent graduate of The Chicago College of Performing Arts at Roosevelt University. Some of Sawyer's favorite roles have been Mary Sunshine in *Chicago*, Will Parker in *Oklahoma*, Daddy Bruebeck in *Sweet Charity*, and Cain in *Children of Eden*. Sawyer would like to thank his family, friends, and the amazing faculty at CCPA.





GABRIEL STERN | THEO

Gabriel is thrilled to be making his BoHo Theatre debut. He most recently played Frank Jr. in The Music Theatre Company's *Merrily We Roll Along*. Gabriel performs on both stage and film. He has trained with Three Cat Education, Light Opera Works, Child's Play, Music Institute of Chicago, Wishing Star, Play On, and Striding Lion. Thanks to my family and friends for their support and BoHo Theatre for this opportunity.



DANA TRETТА | CATHERINE

Dana is very happy to return to BoHo, where she previously performed in the Non-Equity Jeff-nominated *The Glorious Ones* and *The Life*. Recent Chicago credits include work with Theo Ubique (*Cabaret*, *Some Enchanted Evening*, & *Side by Side by Sondheim*), Griffin Theatre (*Company*), About Face Theatre (*The Homosexuals*), and The Hypocrites (*Cabaret*). She has also enjoyed performing with the Marriott Theatre Lincolnshire, Writer's Theatre, TimeLine, Route 66, Provision, The House, Bailiwick Repertory, Timber Lake Playhouse, StageLeft, and White Horse Theatre Company. Many thanks to Peter, Brenda, and Nick!



KELSEY ANDRES | PLAYER

Kelsey is excited to be working with BoHo for the first time! She was recently seen in *Sunset Boulevard*, *Flight of the Lawnchair Man*, *Sweet Charity*, *Red Herring*, and *Children of Eden* at the Timber Lake Playhouse! Kelsey is a senior at the Chicago College of the Performing Arts at Roosevelt University, pursuing a BFA in Musical Theatre. She would like to thank BoHo for the amazing opportunity and her CCPA mentors, friends, and family for their constant love and support.



CHRISTOPHER LOGAN | PLAYER

Christopher is grateful to be making his Chicago debut with BoHo Theatre. Logan has a B.A. in Music from the University of Wisconsin-Eau Claire. He was recently seen performing aboard the "Navigator of the Seas" as a featured artist with Royal Caribbean Productions. Other credits include: *Cat on a Hot Tin Roof* (Brick), *Footloose!* (Ren), *Bent* (Horst), and *The Fantasticks* (Matt).

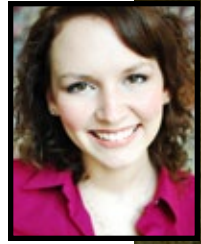


MAGGIE PORTMAN | PLAYER, DANCE CAPTAIN

Maggie makes her BoHo debut, yay! Other credits: Meg in *Brigadoon* at Light Opera Works, Rumpleteaser/Demeter in *Cats* at Theo Ubique Theatre, and Squeaky Fromme in *Assassins* and Evelyn Nesbit in *Ragtime* at Porchlight Music Theatre. She won the 2009 and 2010 non-equity Jeff Award for Best actress in a principal role for Florence in *Chess* and Eva Peron in *Evita*. Maggie co-founded and runs a 6-year-old Chicago non-profit childrens theatre called Li'l Buds Theatre Company. "We teach at schools all over Chicago and do two mainstage shows a year." (Coming soon, our holiday original musical *Tinsel*) www.lilbudstheatre.com. Thanks family and friends!

LESLIE ALLISON SMITH | PLAYER

Leslie is excited to make her professional theatrical debut in *Pippin!* She is so grateful for this wonderful opportunity and would like to thank the fantastic cast, crew, designers, and directors. Leslie has also been seen in *Les Miserables* (Cosette), *Thoroughly Modern Millie* (Millie Dilmount), *A Chorus Line* (Connie), *Singin' in the Rain* (Kathy Selden), and *Brigadoon* (Jean McClaren). Thanks to my family and friends for their undying support and love; I'd be lost without you! Merde.



DANIEL SPAGNUOLO | PLAYER

Daniel is excited to be doing one of his favorite musicals. Since moving to Chicago, Daniel has performed in several productions with Light Opera Works: *The Student Prince* (Lackey/Huzzar), *Brigadoon* (Sword Dancer), *Hello, Dolly!*, and *Carousel*. Daniel has also worked with Chamber Opera Chicago as Dance Captain for Jane Austen's *Pride and Prejudice* and with Brown Paper Box Company's *Reefer Madness: the Musical* as Jesus. Love to my family and my Chicago family. www.CatalystCabaret.com



PRODUCTION CREW BIOGRAPHIES

STEPHEN SCHWARTZ | MUSIC AND LYRICS

Mr. Schwartz has contributed music and/or lyrics to *Godspell*, *Pippin*, *The Magic Show*, *The Baker's Wife*, *Working Rags*, *Children Of Eden*, *My Fairytale*, and the current Broadway hit *Wicked*. He collaborated with Leonard Bernstein on the English texts for Bernstein's *Mass* and wrote the title song for the play and movie *Butterflies Are Free*. For children, he has written songs for two musicals, *Captain Louie* and *My Son Pinocchio*. For films, he collaborated with Alan Menken on Disney's *Enchanted*, *Pocahontas*, and *The Hunchback Of Notre Dame*, and wrote the songs for the DreamWorks animated feature *The Prince Of Egypt*. He has released two CDs entitled *Reluctant Pilgrim* and *Uncharted Territory*. His first opera, *Seance On A Wet Afternoon*, premiered with Opera Santa Barbara in the fall of 2009 and was recently produced by New York City Opera. Awards include three Academy Awards, four Grammy Awards, four Drama Desk Awards, and a tiny handful of tennis trophies. www.stephenschwartz.com

ROGER O. HIRSON | BOOK

Mr. Hirson is an American dramatist and screenwriter best known for his books of the Broadway musicals, *Pippin* and *Walking Happy*, for both of which he was nominated for a Tony Award. He has contributed extensively for original television anthology series episodes since the 1950s.

PETER MARSTON SULLIVAN | DIRECTOR

Peter is the proud Artistic Director of BoHo Theatre and has worked for the Marriott Theatre for over seven years in various capacities, including his current position of Artistic Associate. Peter earned a BA in Theatre and an MA in Teaching at Trinity University in San Antonio, Texas, and an MFA in Directing at Illinois State University. Recent directing projects include last fall's *Big River: The Adventures of Huckleberry Finn* (Jeff Award-nominations for Best Production [Musical] and Best Director), *Icarus, I Am My Own Wife* (co-director), *Ghosts, Playing with Fire*, and *M. Butterfly* at BoHo; *Black Comedy* at Piccolo Theatre, *Monster Garden* at the Gorilla Tango Theatre, and *Cry Havoc* at Bailiwick Repertory. Special thanks to an amazing cast and crew, and in particular Brenda, Nick, Peter Blair, and Peter Robel.

BRENDA DIDIER | CHOREOGRAPHER

Brenda is thrilled to be returning to BoHo with *Pippin!* Previous Boho credits include *The Wild Party, Side Show, The Life* (Non-equity Jeff Award), and *Jekyll and Hyde*. Brenda is a freelance director/choreographer and owner/director of the Lincolnshire Academy of Dance. Ms. Didier is a multiple Jeff Award and After Dark Award recipient. Much gratitude to Peter S., Peter B., and Nick for the opportunity and collaboration. Love to Michael and Mom! Enjoy!

NICK SULA | MUSIC DIRECTOR

Nick is proud to return to BoHo Theatre! BoHo credits: *Hello Again, The Glorious Ones* (Jeff Nomination), *La Cage aux Folles, Jekyll & Hyde, Songs for a New World, Side Show, The Life, Wild Women of BoHo*. Other work includes Porchlight: Music director for *The Teapot Scandals*, pianist for *Ragtime, The Secret Garden, Sweeney Todd*; Light Opera Works: Assistant conductor for *The Music Man, Oklahoma!*; White Horse Theatre: *Merrily We Roll Along* (Jeff Citation). Cabaret: *7 Deadly Sins of a Diva, Not At My Audition, Desperate House Managers, I'll Stop the World and Belt With You, Simply Scotty*.

JOHN ZUIKER | SCENIC DESIGN

John is an Artistic Affiliate with BoHo. John received the 2010 Non-Equity Jeff Award for Scenic Design for *I Am My Own Wife*. Some of his credits include: *An Incident, Close Up Space, In The Blood, Spelling Bee, Jekyll and Hyde, M. Butterfly, Songs for a New World, Sideshow, C.S. Lewis on Stage, Beast on the Moon, The Beauty Queen of Leenane, The Glass Menagerie*, and others. He holds an MFA from Carnegie Mellon University. www.johnzuiker.com

BILL MOREY | COSTUME DESIGN

Bill previously designed BoHo's *Gross Indecency*. He recently made his Off Broadway debut doing costumes for *Tomorrow Morning at the York*. He received a 2008 Equity Jeff Award for costuming Porchlight Music Theatre's *Nine* as well as nominations in 2009 for *Candide*, and in 2010 for *Into the Woods*. He has received two After Dark Awards and Broadway World Chicago award nominations. He has worked with Timeline, Lifeline, Theo Ubique, Griffin, Piven, Bailiwick, Hell in a Handbag, The Scooty and JoJo Show and others. www.billmorey.com

CHRISTOPHER BURPEE | LIGHTING DESIGN

Christopher is pleased to be working with BoHo for the first time on *Pippin*. Chris is the Resident lighting designer at Redtwist Theatre, where his design credits include the Jeff Award winning production of *Man From Nebraska, Lobby Hero*, and *The Pillowman*. Other recent designs include *Secret Garden* at NEIU and *Rent* for NightBlue. Chris is a graduate of The Theatre School at DePaul University.

CASSY SCHILLO | STAGE MANAGER, PROPERTIES DESIGNER

Cassy is pleased to be returning to BoHo's company for *Pippin!* Recently earning a BFA from University of Wisconsin-Whitewater, she is excited to continue that passion in Midwest theatres. Recent credits include Properties Master for Marriott Theatre's *Shout* and StageManager/Sound Designer for The Verge's production of *Look Back in Anger*.

ANNA HAMMONDS | ASSISTANT DIRECTOR

Anna is a proud company member of BoHo Theatre. Most recently, she was seen in BoHo's *Big River* (Mary Jane). Other recent credits include: *White Noise*, Royal George Theatre (Laurel Siller U/S), *Noises Off*, TATC (Poppy), *It's A Wonderful Life: Radio Play*, Fox Valley Rep (Sally). Also Marriott Theatre, JPAC, and Emerald City. Past company member with Renaissance Rep in Dickson, TN, and two national tours of *A Christmas Carol*. She is grateful to Peter Sullivan and the BoHo artistic team for this opportunity from a different perspective! For Ryan...thank you.

TAMMY GOODMAN | PRODUCTION MANAGER

Tammy is thrilled to be working with BoHo again! She started as an intern in 2008, and moved on to assist with the fabulous wigs for *La Cage Aux Folles*. Recently, she stage managed and was the lighting assistant for *Dearly Departed* at Theater in the Woods. Tammy graduated this past May from Occidental College with a B.A. in Theater. She would like to thank her family, friends, and her BoHo family for all of their love and support!

ADRIAN JUAREZ | ASSISTANT STAGE MANAGER

Adrian has been involved with theater since age six and is now a freshman at Columbia College majoring in Technical Theater. This is Adrian's first show in the Chicago theater scene. He is pleased to have the opportunity to work with such a talented and fresh theater ensemble as his first show here in Chicago. Adrian thanks his mother for her never-ending support and Arik, who taught him to follow his goals & dreams.



SPECIAL THANKS

Theater Wit for welcoming us; The Marriott Theatre: Terry James, Andy Hite, Aaron Thielen, Margaret Newton, Rob Rahn; Rick Julien; Peter Coombs Photography; Cooper's; Li'l Buds Theatre; Brenda Didier and Lincolnshire Academy of Dance; Michael Weber and Porchlight Music Theatre.

The Illinois Arts Council, a state agency; the Richard H. Driehaus Foundation; the Gaylord and Dorothy Donnelley Foundation; the Alphawood Foundation; the Arts & Business Council of Chicago; ArtsWorks Fund for Organizational Development; The Saints for their financial and artistic support (and for helping us find our seats); and generous matching donations from Jim Beam and Takeda Pharmaceuticals.

The BoHo Board of Directors and Company members who strive daily to make this a place where artists can learn, grow and fulfill their dreams.

HELP US BRING ART TO THE STAGE

While BoHo Theatre has been critically acclaimed, with **11 Jeff Awards and 40 nominations**, we remain a small neighborhood theatre and ticket sales cover only a portion of our operating budget. Through your generous donations, you can ensure that critical elements of the art appear on BoHo's stage.

Your donations go directly to sponsoring a position or element within a BoHo production. You receive thanks directly alongside the position or element you sponsor in BoHo programs and promotional materials!

ADOPT A DIRECTOR, DESIGNER, OR CAST TODAY!

Visit us online or connect with your house manager after the show to find out how we can design the perfect sponsorship package for you!

www.BoHoTheatre.com



John Leen and Sean Thomas in BoHo's *Big River*.
Photo by Brandon Dahlquist.



BECOME A PART OF THE ART!

BoHo Theatre is growing quickly! Currently in our seventh season, we are now a resident company at the new Theater Wit, which increases our capacity and visibility, as well as maintaining our home at the Heartland Studio for new works, rehearsals, and to foster up-and-coming young theatre companies. As part of our transition, we are actively seeking board members to join our outgoing and artistic family.

WHAT DOES BEING A BOARD MEMBER MEAN?

Board members play a strong part in maintaining the BoHo vision and mission, building community relationships, developing resources, and monitoring our image and marketing effectiveness.

WHAT DO I GET BY BEING ON THE BOARD?

Board members get to attend open rehearsals as part of the creative process, participate in talk-backs with casts and designers, attend special receptions for each show, take part in our new works program, be part of creative brainstorming committees, and, of course, get free subscriptions to the BoHo season.

For more information, visit us online at www.bohotheatre.com/jointheboard, or contact Peter Marston Sullivan at marston.sullivan@bohotheatre.com

BoHo
Small. Beautiful. Frictionless.

presents

The "Us-Holiday" Holiday Musical...

"Striking 12 is a match for those who hate holiday musicals... this is a score with tunes that float around the room and lyrics that are able to get inside your head."

—Chris Jones, *Chicago Tribune*

December 1 - January 1

www.BoHoTheatre.com for tickets & info

Striking
12

Brendan Milburn,
Rachel Sheinkin, &
Valerie Vigoda

Cooper's

A Neighborhood Eatery

"The real attraction is the barbecue, dry rubbed and smoked in house, and served with Cooper's own homemade sauce."

—*Metromix Chicago*

"Cooper's never disappoints."

—*Katie C., Yelp review*

Located just across the street from Theater Wit!
1232 W. Belmont Ave.
773.929.2667

www.cooperschicago.com

**SHOW YOUR
BOHO THEATRE
TICKET STUB FOR
A 10% DISCOUNT
ON FOOD!**

TINSEL!

THE MUSICAL

NOV. 26 - DEC. 18

[WWW.LILBUDSTHEATRE.ORG](http://www.LILBUDSTHEATRE.ORG)

SAT @ 1PM, SUN @ 11AM

(773) 404-7336

GREENHOUSE THEATER CENTER

www.greenhousetheater.org

2257 N. LINCOLN AVE

**Lil
BUDS**
THEATRE COMPANY

every great performance



PETER COOMBS
photography



deserves great pictures



MISSION: SMART ART

Theater Wit dedicates itself to producing plays that address contemporary issues with humor and intelligence. With groundbreaking new plays and classic works, Theater Wit seeks to engage its audiences with wit and wisdom.

Now a year at our newly renovated 3 theater complex, Theater Wit strives to create a welcoming and professional home for the neighborhood to experience Chicago's diversely talented theater scene.

MORE THEATER. MORE!!!

Take full advantage of all the productions and companies at Theater Wit

MEMBERSHIP

With a Theater Wit Membership, you can see as many plays as you want, year round, for \$36/month:

- » Reserve a seat at any production in our facility. Do it in advance or just drop by on impulse.
- » Free ticket exchanges and replacement tickets.
- » Attend as many different shows as you want each month. Come once, twice or five times a week at no additional charge.
- » No initiation or startup fee, but members must agree to a three-month minimum.
- » Twice a year, bring a friend for free.

FLEXPASS

Theater Wit's FlexPass allows you see anything in the building at a dramatically reduced price:

- » Your FlexPass gives you 10 tickets for any shows at Theater Wit to be used any way you want for only \$200. See 10 shows, go on 5 dates or just bring your 9 closest friends with you to a show.
- » After ordering, you get a card in the mail within a week with your FlexPass code which can be used online, over the phone or at the box office.

RESIDENT AND VISITING SHOWS THIS FALL AT THEATER WIT

Timeline Theatre Company
A Walk in the Woods
August – November

Porchlight Music Theatre
Putting It Together
September 6 – October 16

Stage Left
Farragut North
September 7 – October 9

Bohemian Theatre Ensemble
Pippin
October 13 – November 13

Griffin Theatre Ensemble
Spring Awakening
November – December

Theater Wit
The Santaland Diaries
November – December

**Call the Theater Wit Box Office
for tickets
773-975-8150
or visit us online at
theaterwit.org**

THEATER WIT STAFF

Jeremy Wechsler.....*Artistic Director*
David Wechsler.....*Company Manager*
Mercedes Rohlfs.....*Grant Director*
Mikey Laird.....*Box Office Manager*
Tamara Berkover.....*Bar Manager*
Jay Kelly, L.C. Williams & Assocs
Press Relations
Michelle D. Miller and John D.
Neumann, Jones Day.....*Legal*
Richard Kasemsarn.....*Architect*
David Trent Zilmer
General Contractor

BOARD OF DIRECTORS

Kathryn Stieber.....*President*
Paul Danao.....*Vice-President*
Charles Hornewer.....*Treasurer*
Todd Goldberg
Ashley Nelson
Neal Smyth
Bruce Wechsler

With so much going on at Theater Wit, we recommend you get our e-newsletter to keep up. Get updated news on our resident companies, pre-production insights, interviews and photos. You can also be our bestest ever e-pals by visting us at facebook.com/theaterwit.

Fill out a mailing list insert and give to any bartender, usher or house manager to get a free piece of chocolate, or sign up online at theaterwit.org/join.

WitRESIDENCE

PROVIDING A HOME TO CHICAGO'S THEATERS

Each season, Theater Wit offers its space to one or more companies to produce in year round. The WitRESIDENCE program combines the principles of a cooperative and a traditional rental house to create a more cohesive, professional, and efficient nonprofit environment. In its facility, Theater Wit will play host to other Chicago theater companies on a minimum two-year basis. The resident companies will volunteer their time for space maintenance, share audience development initiatives, and gain a home under one roof. Meet our resident companies for 2011-2012!

BOHEMIAN THEATRE ENSEMBLE

BoHo Theatre's mission is to create theatre that incorporates the arts as a whole — Art for art's sake.

BoHo's vision is to challenge convention through literary originality and eclectic expression while fostering an ever-evolving artistic environment in which people are inspired to learn, think, dream, and feel. To teach others and ourselves how to expand, create, and present art through theatre while reveling not only in the process, but also in the journey. BoHo's season is chosen to highlight and explore the four bohemian pillars of Truth, Beauty, Freedom, and Love. Four shows, four pillars (and maybe a holiday musical thrown in for good measure!)

STAGE LEFT THEATRE

Stage Left Theatre's mission is to develop and produce plays that inspire debate about political and social topics. We focus on presenting complicated issues in the context of an engaging story, without prescribing a single point of view. We attempt to spark respectful debate about the issues most relevant to our community, and activate audiences to continue those conversations beyond the walls of the theatre. Stage Left also works to inspire playwrights to address political and social themes through our Downstage Left new work development program.

NEW MILLENNIUM THEATRE COMPANY

New Millennium produces a varied season which focuses on new and non-traditional approaches to theater. They create plays geared to audiences who have been reluctant to attend traditional theatre offerings, producing shows that are fun and relevant to today's complex audiences.

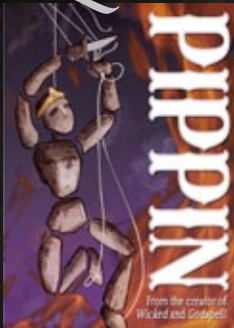


BOHO THEATRE'S 2011/12 SEASON

Here at BoHo Theatre, our seasons are anchored by the Four Pillars of our Bohemian Values: **Truth, Beauty, Freedom, and Love**. Each show in our season is chosen to represent one of these pillars by highlighting that theme within its production.

Join us in exploring these values in our 2011/12 Season in residence at Theater Wit.

Love



PIPPIN

by Stephen Schwartz
and Roger O. Hirson

Directed by P. Marston Sullivan
Choreographed by Brenda Didier

Oct 14 – Nov 13, 2011

Truth



TARTUFFE

by Molière

Adapted by Ranjit Bolt
Directed by Peter Robel

Jan 13 – Feb 12, 2012



THE RAINMAKER

by N. Richard Nash

Directed by Stephen Genovese
April 6 – May 6, 2012



FLOYD COLLINS

by Tina Landau
and Adam Guettel

Directed by P. Marston Sullivan
June 15 – July 15, 2012

Beauty

Freedom

WWW.BOHOTHEATRE.COM
THEATER WIT BOX OFFICE 773-975-8150